

Primary Source Verification Details & Guidelines

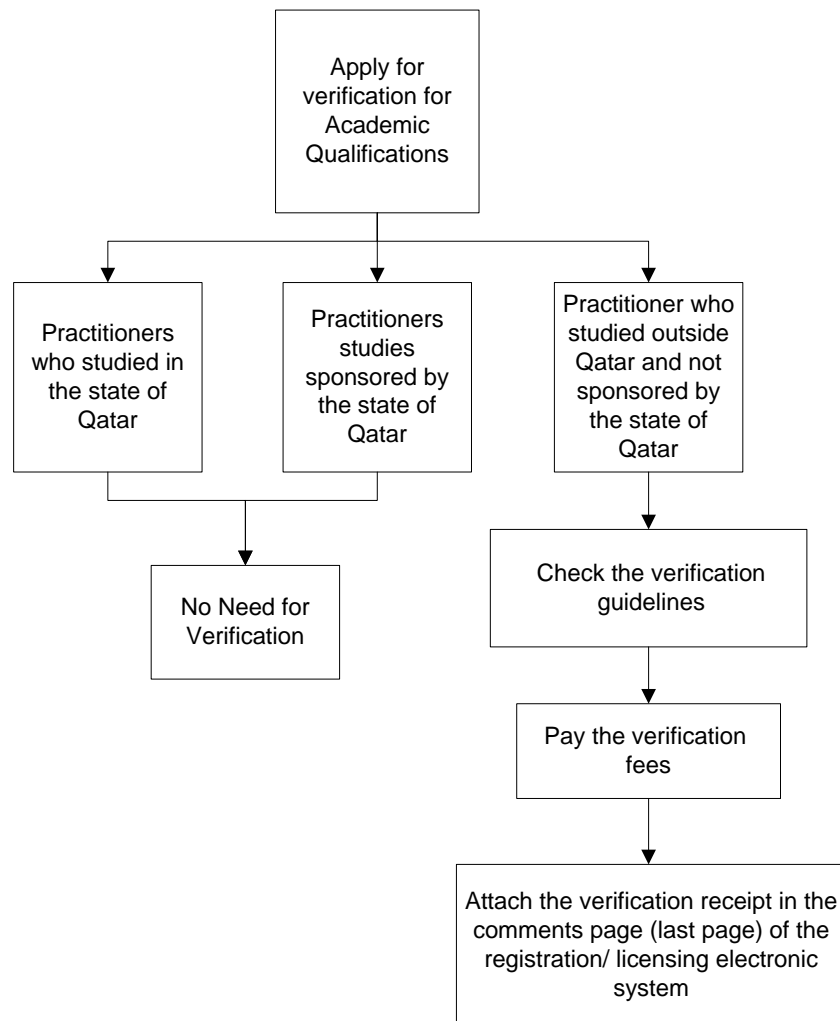
Applicants with no former registration or licensing through QCHP

1st Step:

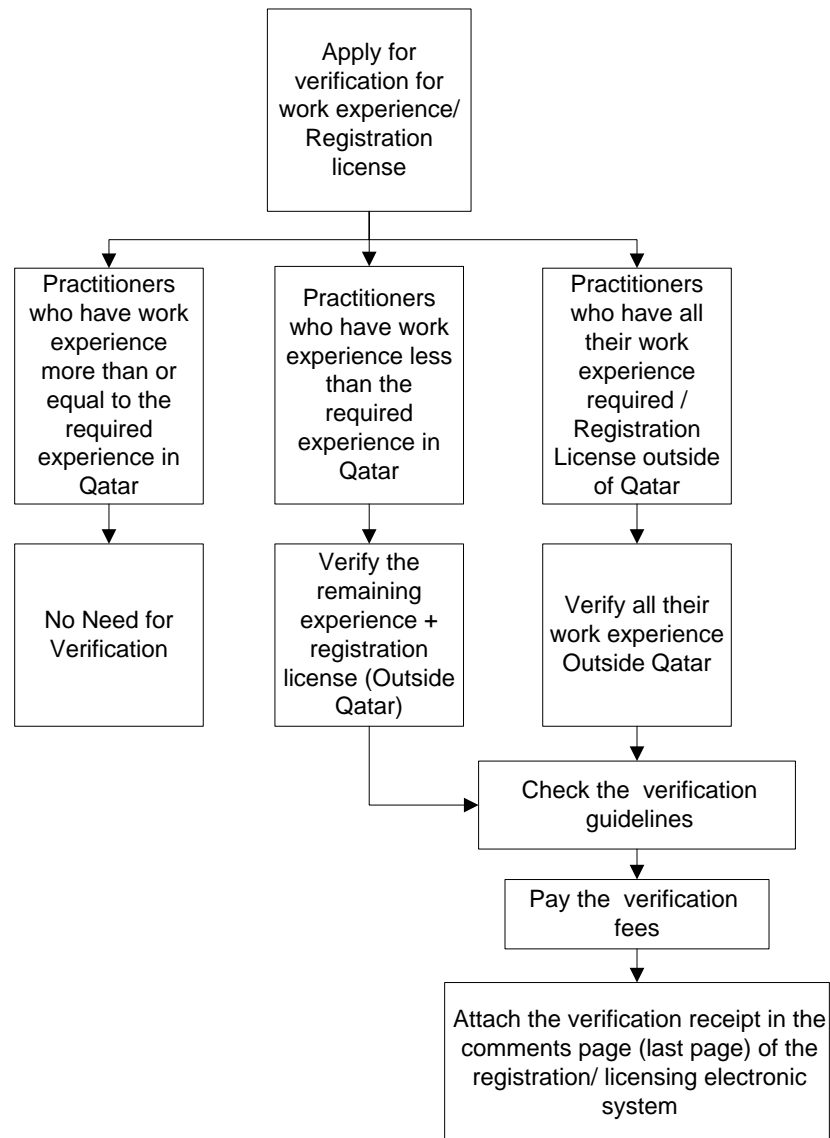
- Contact your focal point for guidance.

2nd Step:

- Apply for verification.
 - a. Academic Qualifications



b. Work Experience and Registration License



Guidelines for the verification process

There are currently 3 ways to apply for verification

1. **(RECOMMENDED)** Online application for verification process through the following link, <http://www.dfgsch.com>, which permits the applicant, to apply for online verification, e-payment and follow-up on the application.
2. Download the Data Flow application form from the SCH website by visiting <http://www.sch.gov.qa/sch/En/scontent.jsp?smenuId=53>, complete the form, then attach the required documents, a copy of the bank transfer fees and send them to the following email – qatarmoh@dataflowgroup.com.

Bank account details:

Dataflow FZ LLC
Emirates NB BD, Dubai Media city Branch
Account NO: 1014239180701
IBAN: AE12 0260 0010 1423 9180 701
Swift Code: EBILAEAD

3. Download the Data Flow application form from the SCH website by visiting <http://www.sch.gov.qa/sch/En/scontent.jsp?smenuId=53>, complete the form, then attach the required documents, submit and pay the fees at the Data Flow counter, SCH premises.
- To follow up on applications submitted by e-mail or to the verification counter, SCH premises, please visit https://dataflowbpm.com/sbm/Applicant/MOH_Applicant.jsp.

Notes

- Registration department/QCHP will receive the reports directly and contact the focal point/ applicant if needed.
- The Academic Qualifications and Experience provided in the State of Qatar are exempted from Data Flow Verification.
- Qatari healthcare practitioners who studied abroad are exempted from Data Flow verification, provided that their studies were sponsored by the State of Qatar.
- Practitioners who already have medical license and have never verified their academic qualification needs to do retrospective verification for their qualification – Refer to Circular (15) - Retrospective Verification of Academic Qualification.

3rd Step:

- Apply for registration/ evaluation through the Registration/ Licensing electronic system.